



**Artist** **Richard Woods**

**Title** ***Holiday Home***

**Location** **Folkestone Harbour**



This artwork is part of a series of six installations in different (mostly absurd) locations around the town.

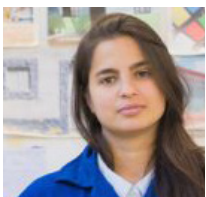
Why do you think Woods has chosen to do this?



Discuss with your friends what you think Woods is saying about holiday homes in Folkestone with his artworks.



Imagine what the interior of *Holiday Home* would look like, sketch some ideas.



**Artist** **Sol Calero**

**Title** ***Casa Anacaona***

**Location** **Folkestone Harbour Arm**



Sol Calero's work is influenced by the place where her artworks are located and by the people who interact with them.

Sit and sketch the view from inside, think about how the colours, textures, sounds and smells may have influenced Calero's furniture.



Walk along the seafront and look for objects washed-up on the shore. Where have they come from? How has their journey changed them?



Sol Calero draws influence from many cultures and is inspired by gender identity, social and political context. Discuss how your creativity is influenced.

Discuss how your surroundings, your cultural identity and your life experiences influence your artwork, writing or music.



**Artist** **Lubaina Himid**

**Title** ***Jelly Mould***

**Location** **Folkestone Seafront**



Lubaina Himid's artworks often tell stories of cultural history and predominantly Black identity and creativity.

Sit in *Jelly Mould Pavilion* and tell stories about how individuals can change history. Can anyone change the world? Could you?

Why has she placed the *Jelly Mould* here?



Make some drawings of the pavilion from inside and looking at it from a distance.